



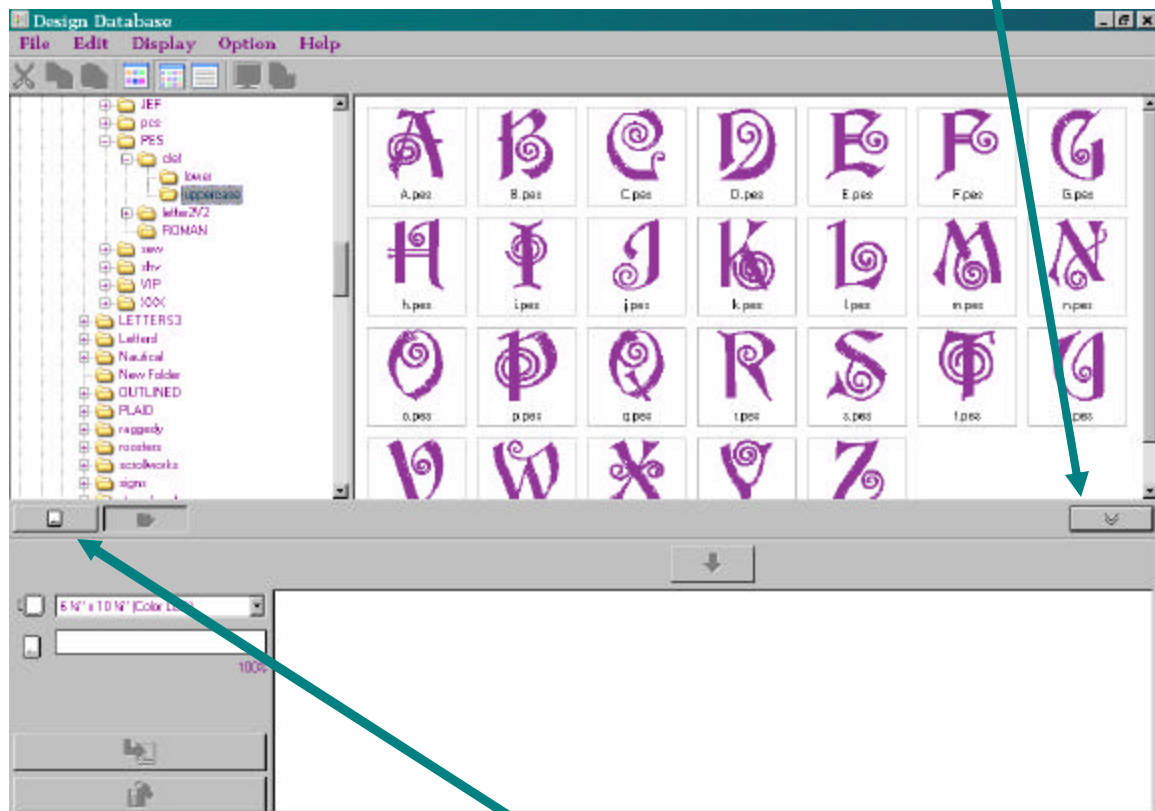
A Stitch in Time – Embroidery

By: Carol Price

Problem: you have a memory card for your embroidery machine and you want to ADD designs to the card. In other words, you want the designs that are already on the card and you want more designs added to the card. Well Design Database erases the card before it writes new designs to the card.

Here is a work around, there are ALWAYS work arounds!

Open Design Database program. Make sure that the Write to Card Window is open. If you do not have the write to card window open (the lower portion of the screen) click on the arrow to open it.



The view above is showing is the contents of the computer hard drive.

Click on the icon to view the contents of the memory card.

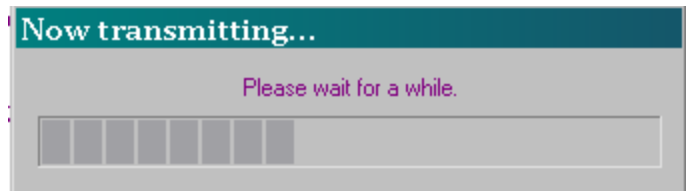




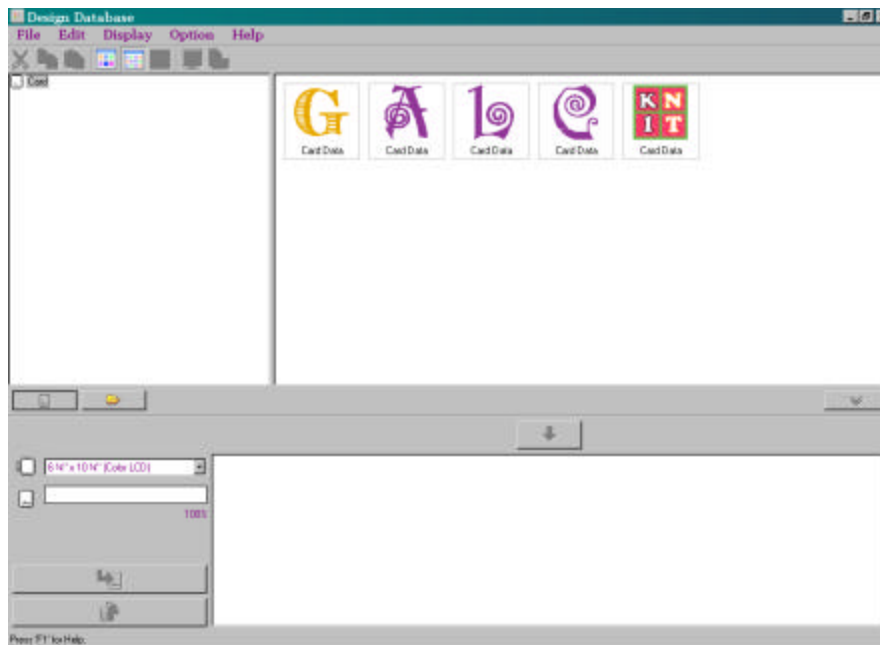
A Stitch in Time – Embroidery

By: Carol Price

The computer will read the contents of the memory card, but it will take a few moments for the card to be read. This message will appear while the card information is being transmitted to your computer.

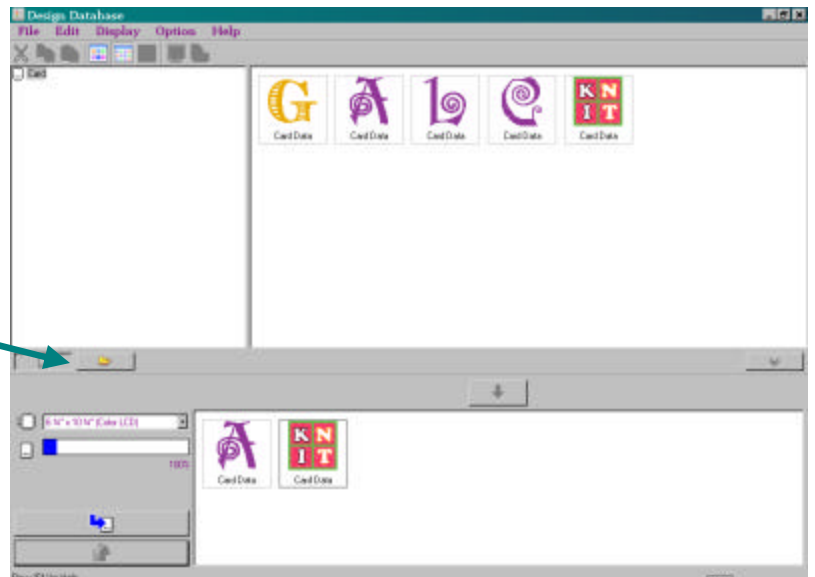


Now the contents of the card is showing the in the window. These are the designs that are on the memory card. Click on any design that you want to keep on the card and drag it to the “write to card window” in the lower half of the screen.



The A and the Knit design are going to be kept on the card while the G, L and C will be deleted once the new designs are added and written to the card.

Click on the folder icon to view the contents of the computer/flash drive/cd drive/ or other location where your designs are stored.





A Stitch in Time – Embroidery

By: Carol Price

The designs to be written to the card are in the write to card window. Click on the icon to write these selected designs to the card.

Note: you do not need to only select PES Files in Version 8, Design Database will automatically convert designs into PES when it writes them to the memory card.

